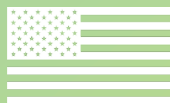


SOUNDSPHERE[®]

L O U D S P E A K E R S

an  MSE AUDIO brand



Made in USA

CONTENTS

Coverage Area.....	3
Product Line.....	4
Loudspeakers.....	6
Applications.....	8



Superior Service. Quality Guaranteed.

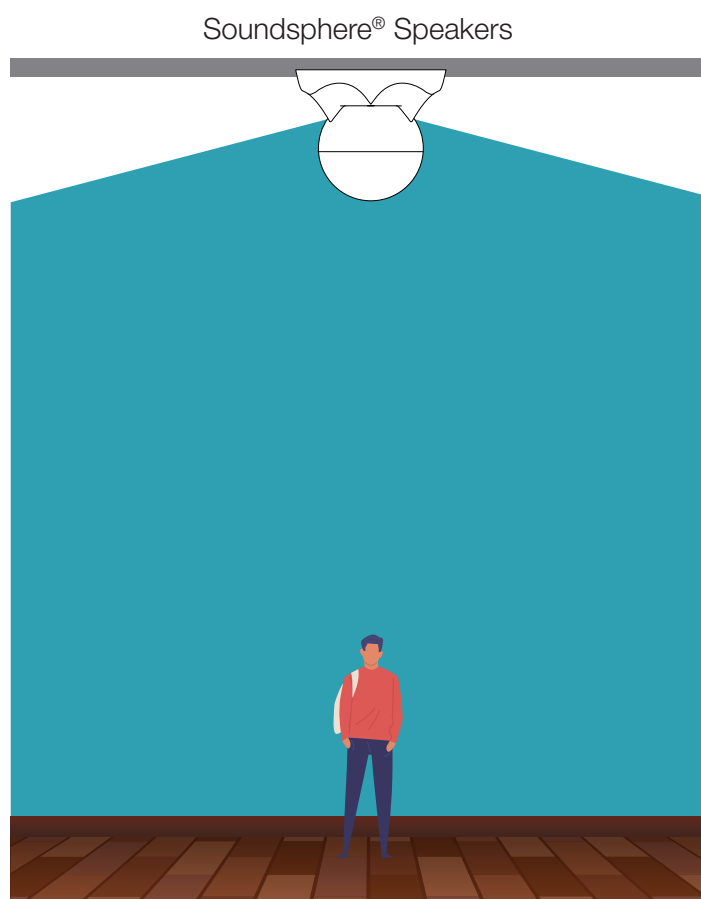
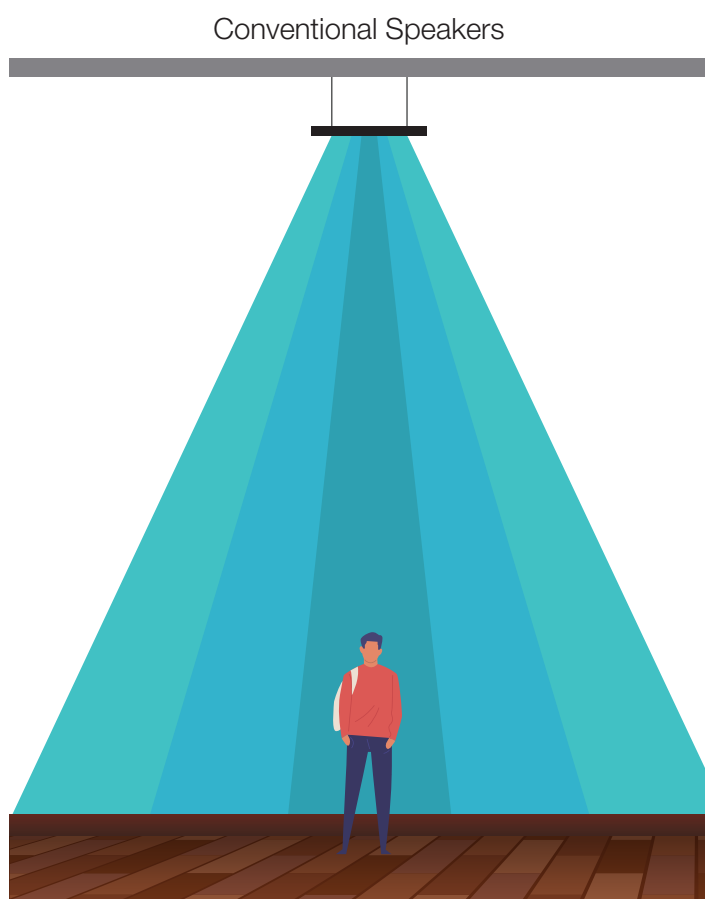
The Soundsphere Engineering Department collectively represents more than 50 years of experience in public area and commercial sound system development and application. Its technical team of specialized design, development, application and acoustical engineers brings a combination of both innovative and proven design concepts and practices to the Soundsphere speaker product line. Soundsphere speakers offer fast, efficient and cost-effective answers to your public area or commercial sound system requirements.

Soundsphere speakers can be installed easily and quickly within a day or less. The quality of materials and rugged construction of the speakers make them resistant to potential damage in facilities like gymnasiums and factories.

Soundsphere speakers produce a diffused sound field that will not sound harsh or blaring anywhere over their broad coverage area. Voice announcements and music are more pleasing and less intrusive than with conventional loudspeakers, and fewer speakers are needed to cover a given area.

Because of their broad coverage, Soundsphere speakers are generally placed overhead instead of in corners or along walls. The speakers are thus closer to more listeners, allowing them to hear more clear, direct sound.

Soundsphere speakers are made in the U.S.A. from the finest components. Although they are warranted for five years, speakers made in the first days of the company's existence are still in operation worldwide.



SOUNDSPHERE® PRODUCT LINE

Loudspeakers

Omnidirectional speaker that produces a hemisphere of full-frequency sound.



110B



110 Page



Q-6



Q-8



Q-12A



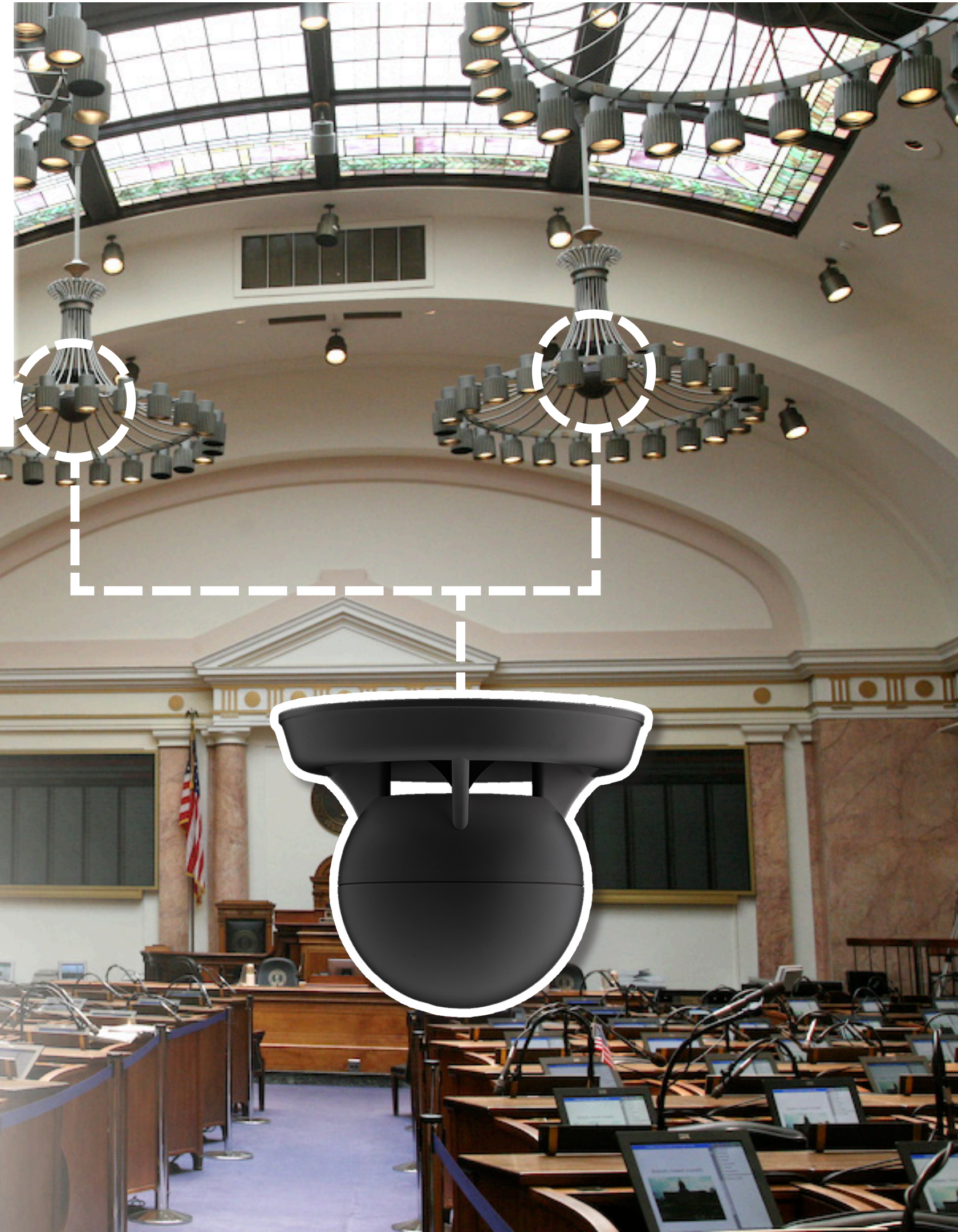
Q-12AWR

THE BEST SOUND AROUND™

Soundsphere® omnidirectional speakers and speaker systems feature hemispherical dispersion and full-range sound, creating solutions for a multitude of applications and environments.

From offices to ice arenas, from conference rooms to convention centers, there is a broad coverage solution from Soundsphere, the leader in omnidirectional speaker technology since 1976.

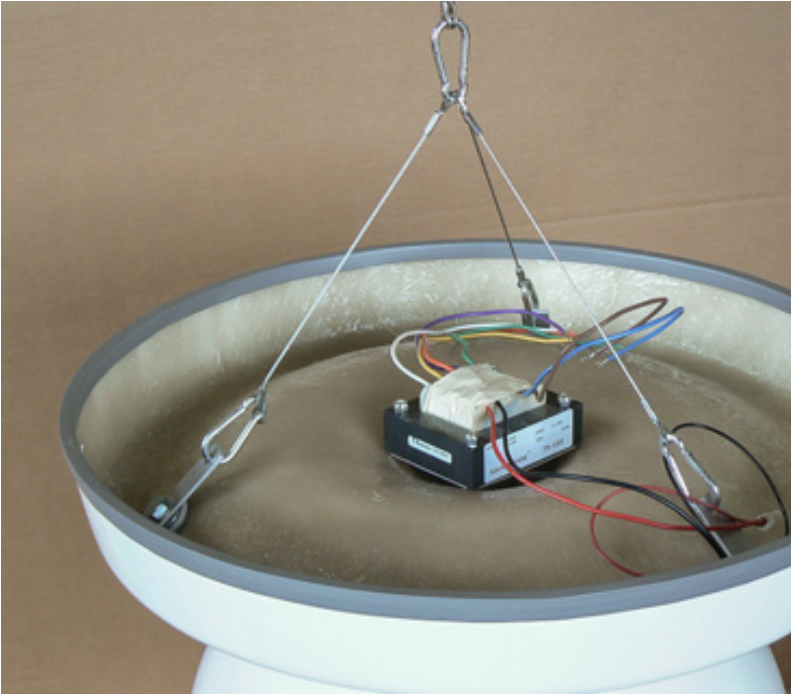
Soundsphere speakers produce low, mid and high frequencies equally throughout their 180° x 360° area of coverage, maximizing speech intelligibility and music quality.



LOUDSPEAKERS

Every Soundsphere omnidirectional speaker produces a hemisphere of full-frequency sound. Conventional speakers produce coverage patterns that vary with frequency. This phenomenon can be heard in places with common ceiling speakers; the bass is heard everywhere, but the further someone moves away from the speaker, the mid- and high-frequency sounds disappear. Soundsphere solves this problem with a smooth, even coverage throughout the space.

Hanging kits for single point suspensions are provided with purchase. Extension cables for use with hanging kits facilitate lower mounting heights when required. Beam clips and clamps quickly provide suspension points in open beam or truss ceilings, and mounting brackets are used for installation on flat surfaces.



Optional Accessories

- Line Transformers: Soundsphere transformers are designed for use in 25V, 70V, and 100V constant voltage systems and feature excellent broad band performance. 15-250 Watts



110B



110 Page



Q-6



Q-8



Q-12A



Q-12AWR

System Type	6-1/2" Single Cone	6-1/2" Single Cone	Coaxial 6-1/2" LF, 1/2" dome HF	Coaxial 8" LF, 1" dome HF	12" True Coaxial	12" True Coaxial
Frequency Response (±3 dB)	220 Hz - 18 kHz	500 Hz - 5.5 kHz	220 Hz - 20 kHz	200 Hz - 17 kHz	120 Hz - 13 kHz	120 Hz - 13 kHz
Nominal Impedance	4 Ω	4 Ω	4 Ω	8 Ω	8 Ω	8 Ω
Max. Continuous Power	35 Watts	60 Watts	35 Watts	100 Watts	250 Watts	250 Watts
Height	11-7/8" (302 mm)	11-7/8" (302 mm)	11-7/8" (302 mm)	19" (483 mm)	25" (635mm)	25" (635mm)
Reflector Diameter	14-7/8" (378 mm)	14-7/8" (378 mm)	14-7/8" (378 mm)	20" (508 mm)	26" (660 mm)	26" (660 mm)
Sphere Diameter	10" (254 mm)	10" (254 mm)	10" (254 mm)	16" (406 mm)	22" (560 mm)	22" (560 mm)
Weight	8 lbs (3.6 kg)	8 lbs (3.6 kg)	8 lbs (3.6 kg)	22 lbs (10 kg)	39 lbs (17.6 kg)	39 lbs (17.6 kg)
Certifications	CE, WEEE	CE, WEEE	CE, WEEE	CE, WEEE	CE, WEEE	CE, WEEE



APPLICATIONS

110B



Seamless background music and clear voice announcements. A compact, unobtrusive speaker.

Casinos

Factories

Warehouses

Courtrooms

Supermarkets

Building Lobbies

Classrooms

Restaurants

Shopping Centers

Educational Facilities

Airports/Transportation

Stadium or Arena Concourses

110 Page



Critical announcements that need to be both heard and understood in high-noise environments.

Airports

Factories

Warehouses

Fire Houses

EMS Facilities

Train Stations

Cruise Terminals

Municipal Buildings

Correctional Institutions

Q-6



Full-range music and voice. Soundsphere's most compact weatherproof loudspeaker.

Restaurants

Health Clubs

Sports Bars

Hotel Lobbies

Classrooms

Retail Stores

Shopping Centers

Outdoor Applications

Q-8



Full-range music and voice. More robust, offering greater sensitivity and power-handling capability.

Airports

Factories

Retail Stores

Restaurants

Courtrooms

Gymnasiums

Bars & Nightclubs

Shopping Centers

Houses of Worship

Educational Facilities

Hotel Lobbies & Atriums

Q-12A



Maximum power for high sound pressure levels.
Clear voice announcements and high-fidelity foreground music.

Factories
Ice Rinks
Gymnasiums
Swimming Pools

Houses of Worship
Bars & Nightclubs
Open Public Areas
Transportation Terminals

Q-12AWR



High sound pressure levels for outdoors.
-Weatherproof version of Q-12A.

Ice Rinks
Factories
Gymnasiums
Swimming Pools

Outdoor Markets
Bars & Nightclubs
Houses of Worship
Transportation Terminals

Also...

If you are looking for other 70V or ceiling mount speakers, check out speakers from our other MSE Audio brands: Soundtube, SolidDrive and Rockustics.

Visit MSEAudio.com.





MSE AUDIO®

Our Brands

Parent company of six major manufacturing brands, MSE Audio utilizes the latest audio technology to produce the best sounding, and best performing speakers. With multiple design and manufacturing centers across the residential and commercial spheres, MSE Audio products rely on synergistic, cross-platform engineering to deliver exceptional durability, industry-leading quality control, and refined aesthetics.



Audio Perfection Realized™

Induction Dynamics® speakers are engineered to achieve precise sound in any home theater and are hand-tuned to exact specifications. This meticulous attention to detail and craftsmanship results in design qualities and system-wide performance unlike any other. Handcrafted in the USA.



Speakers for your Life™

Phase Technology®, based in Jacksonville, Florida is one of the oldest and most prestigious speaker manufacturers in the United States. Holding numerous patents for speaker design (including the soft dome tweeter), Phase Technology offers a range of speakers for the home integrator. Handcrafted in the USA.



Sound without Speakers™

SolidDrive® is the solution for invisible sound, providing a hidden sound source for in-wall, surface mount and glass applications. Unique technology transforms surfaces into sound-producing planes that blanket whole rooms with music. SolidDrive products are made in the USA.



Ultra-fidelity Outdoor Speakers™

Rockustics® offers an extensive line of high-fidelity, all-weather outdoor speakers for both home and commercial applications. Each model is designed to enhance the environment by providing the highest quality sound with unparalleled lifelike aesthetics. Handcrafted in the USA.



The Best Sound Around™

Designed for on-ceiling and in-ceiling uses, Soundsphere® speakers produce a diffuse sound field with a wide coverage pattern ideal for PA announcements and music. Soundsphere products are made in the USA.



The Original Pendant Speaker™

Designed for broad, intelligible coverage with superior musicality, SoundTube® speakers elevate the audio experience. From "the Original Pendant Speaker" to models for in-ceiling, surface-mount, IP-addressable, outdoor, focused-point, and more, SoundTube offers speaker solutions for nearly every application.

